

RUS

RUSTCON

RUST CONVERTER

- Eliminates priming, sanding, and other preparation.
- Transforms rust into a tough, corrosion resistant polymer coating in one impressive process.
- Changes the dull and dilapidated looks of the machinery or steel structure to a completely restored one.
- Water-based stain (rust) converting corrosion protection paint
- non-flammable paint
- decorative protection of iron and steel objects



General Information

RUSTCON is a multi-function, stain converting, stain removing agent, by which also surface coatings providing corrosion protection in a single phase can be created. The agent in the paint removes stains from iron surfaces by a chemical process so that the iron compound created is integrated into the coat of paint generated. By way of the additives in RUSTCON, the coat of paint protects iron objects

from further corrosion and also provides a decorative coating. By the preparation stains can be removed, stabilisation and the creation of a corrosion protection coating can be achieved in a single step. The surface created is water-repellent, and is black after thermoplastic drying (softens above 80°C). The temperature resistance of the applied and already dried Rustcon paint coat is guaranteed up to 70-80°C.

Technical Information

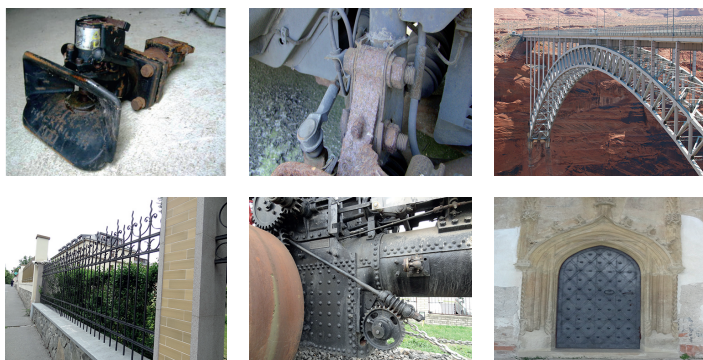
Aggregate State: Liquid
 Colour: white
 Odour: inconspicuous
 pH: > 2 - < 3
 Melting point: 0 °C
 Freezing point: 0 °C

Initial boiling point and boiling range: 100 °C
 Flash point: > 100 °C
 Density: 1000 kg/m³
 Application temperature ranges: +5°C - +30°C.
 Free of non-ferrous metals.
 Material requirement: 100-150g/m² in two layers, subject to surface.
 Storage: In original, well-sealed packaging, at a temperature above +5°. Frost hazardous product.

Application and Use

- **USE:** Mechanically remove the loosely attached stain and coat of paint from the metal surface. The surface must be free from any other contamination as well (e.g. fat, oil, dust, soot, etc.). RUSTCON is only effective on metal and stained surfaces, therefore on formerly painted surfaces only the stained parts need to be treated. Before use, stir the paint thoroughly and apply two coats of paint. The paint may be applied by a brush, roll, by spraying or immersion. Apply the second coat of paint now without thinning, after the first coat of paint has dried (after about 2 hours). Outdoors or in other aggressive environments it is recommended to also use covering paint providing appropriate protection (e.g. enamel paint, oil paint, etc.).
- **APPLICATION:** It is suitable for stain removal and decorative protection of iron and steel objects, machines, fittings, fences, steel handrails, corroding parts of vehicles, forged iron products. It can be applied to both rusty and clean surfaces. In places less exposed to weather impacts, it can also function as individual coat of paint, however, outdoors and in places exposed to other aggressive impacts (e.g. chemical impact) it is recommended to use covering paint suitable for that particular use. Indoors, recoating by RUSTCON applying two coats of paint will provide appropriate corrosion protection and aesthetic effect for many years.

Article nr	Name	Content	Shelf Life	Catalog
T180001	Rustcon 1l	1l	see imprint + 24 months	SURFACE PROTECTION AND TREATMENT
T180005	Rustcon 5l	5l	see imprint + 24 months	SURFACE PROTECTION AND TREATMENT



Notice

All information including images are given with the greatest care. Still, it is appropriate to users regardless of the test the suitability of each product for their own purposes. Tech-Masters is not liable for the completeness and accuracy of information and refuses warranty for your specific use. The guarantee, which Tech-Masters products provide, relates only to the standard conditions of sale of this product. In no case Tech-Masters can be held responsible for incidental damages, or damages for improper use or sale of the product to another customer.

