

# CGD

## CORROSION PROTECTIVE COPPER PAINT

- Suitable metal surfaces and hard plastics
- Good adhesion on most ferrous and non-ferrous metals
- Fast curing
- Can be used for spot welding



# COPPER GUARD

## General Information

COPPER GUARD is a fast-drying acrylic-based copper paint that gives surfaces a durable cover. Good coverage can be reached, depending on layer thickness, in 2 to 3 layers. COPPER GUARD is over

sprayable after 10 minutes with the same product or after 2½ hours with other coatings. The unique characteristic about COPPER GUARD is that, in addition to coating, it can also be used for spot welding.

## Technical Information

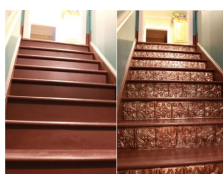
Physical state: Aerosol  
 Odour: Characteristic  
 Propellant: Propane-Butane  
 pH-value: Mixture is non-polar/aprotic.  
 Initial boiling point: -44.5°C  
 Flash point: -97°C  
 Ignition Temperature: 365°C  
 Temperatur resistance: 130°C  
 Auto-ignition temperature: Product is not selfigniting.  
 Explosive properties: Product is not explosive.  
 However, formation of explosive air/vapour mixtures are possible.  
 Lower explosion limit: 0.7 Vol%  
 Upper explosion limit: 13 Vol%  
 Pressure (at 20°C): 4 Bar  
 Vapour pressure (20°C): 8300 hPa  
 Density (20°C): 0.717 g/cm³

VOC: 90.68%  
 Delivery: 1,5 g/s with strong atomization  
 Solubility in water: Not miscible or difficult to mix.  
 Solvent content:  
 Organic solvents: 90.7 %  
 Solids content: 9.6 %  
 Coating  
 Base: Acrylic resin in combination with a high percentage of copper pigments  
 Color: Copper  
 Gloss: Semi gloss  
 Recommended layer thickness: 50 micron wet, ± 10 micron dry  
 Drying time: approx. 15-30 minutes, depending on the layer thickness.  
 Application temperature: 10°C - 25°C  
 Storage conditions: Cool (10°C - 20°C) and dry

## Application and Use

- APPLICATION:
  - Suitable for forge art, metal frames, gutters, sinks, garden ornaments, metal fence or other metal surfaces. Hard plastics.
- USE:
  - Clean the surface of rust, dirt, etc. Allow to dry, sand painted surfaces.
  - Cover adjacent not to paint surfaces.
  - Bring the can to room temperature.
  - Shake vigorously for 2 to 3 minutes. Apply several layers thinly at a distance of approx. 30 cm.
  - Reverse the container after use and clean the spray nozzle.
  - Respect the drying times.

Article nr	Name	Content	Shelf Life	Catalog
T112002	Copper Guard 500ml	500ml	see imprint + 36 months	SURFACE PROTECTION AND TREATMENT



## Notice

All information including images are given with the greatest care. Still, it is appropriate to users regardless of the test the suitability of each product for their own purposes. Tech-Masters is not liable for the completeness and accuracy of information and refuses warranty for your specific use. The guarantee, which Tech-Masters products provide, relates only to the standard conditions of sale of this product. In no case Tech-Masters can be held responsible for incidental damages, or damages for improper use or sale of the product to another customer.

