

ICE

TECH-NO-ICE

ICE AND SNOW MELTER

- 10 times better melting performance than salt
- Works at temperatures to -40°C
- Easy to use: TECH-NO-ICE is applied by hand or the SPREADER
- Economical: 1kg of TECH-NO-ICE can melt 7 to 10m² of ice vs. 1kg of salt can only melt 1m²
- Long-term effectiveness: the water formed by the melted snow and ice will not re-freeze for up to 7 days
- Non-harmful: unlike salt, TECH-NO-ICE is hardly corrosive; it is therefore harmless to animal paws, auto bodies, cement sidewalks, garden vegetation...
- Powerful anti-moisture capacity: TECH-NO-ICE absorbs up to 5 times its weight of water
- Natural product which dissolves to 100%



General Information

TECH-NO-ICE offers a 10 times better melting performance than salt. Due to the unique shape of the pellets they remain lying also on inclined surfaces. TECH-NO-ICE works extremely fast at temperatures to -40°C. TECH-NO-ICE is hygroscopic, that means: when ice and snow are melted away, on the bottom remains a non-freezing thin layer which guarantees a much longer lasting effect compared to salt.

Rapid re-freezing is therefore prevented. Without renewed snowfall and at normal icing, the effect can last up to 7 days. TECH-NO-ICE can be used also for drying damp rooms, because it deprives the contained humidity in the air. Similarly, it can also be applied on floors e.g. in warehouses to reduce existing moisture.

Technical Information

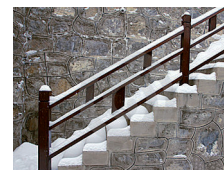
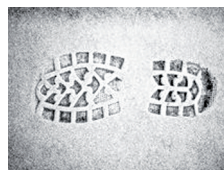
Physical state: solid
 Colour: white
 Odour: not determined

Odour threshold: not determined
 pH (20 °C): 9 - 10.5
 Density: about 900g per liter
 WARNING: store TECH-NO-ICE in a dry location

Application and Use

- APPLICATION:
 - Anti-ice, Anti-snow: work places, pedestrian passageways, vehicle access ramps (roads, doorways, entrances to stores, factory warehouses, stairways, cold storage rooms...)
 - Anti-moisture (drying): cellars, damp warehouses, secondary residences...
 - Dust binder on riding arenas
 - Granite, sand and natural stones: Highest material protection, even long-term application does not cause salt marks.
- USE:
 - ANTI-ICE, ANTI-SNOW:
 - Remove bulk of snow or ice.
 - Spread TECH-NO-ICE evenly at the rate of 1 to 2kg per 10m².
 - Let absorb: TECH-NO-ICE works in and loosens snow and ice.
 - After 15 min., it is possible to remove the ice or snow with a shovel
 - ANTI-MOISTURE:
 - Place a mesh bag (or nylon stocking) filled with TECH-NO-ICE (1 to 2 kg) over a basin with a capacity 5 to 10 times the volume of TECH-NO-ICE.
 - The best results are obtained with good ventilation.

Article nr	Name	Content	Shelf Life	Catalog
T110011	Tech-No-Ice	10kg	see imprint + 24 months	SURFACE PROTECTION AND TREATMENT
T110036	Spreader	1 pc.	-	TOOLS



Notice

All information including images are given with the greatest care. Still, it is appropriate to users regardless of the test the suitability of each product for their own purposes. Tech-Masters is not liable for the completeness and accuracy of information and refuses warranty for your specific use. The guarantee, which Tech-Masters products provide, relates only to the standard conditions of sale of this product. In no case Tech-Masters can be held responsible for incidental damages, or damages for improper use or sale of the product to another customer.

